

- 1
- 2
- 3
- 4
- 5
- 6
- 7
- 8
- 9
- 10
- 11
- 12
- 13
- 14
- 15
- 16
- 17
- 18

MAIN SPECIFICATIONS

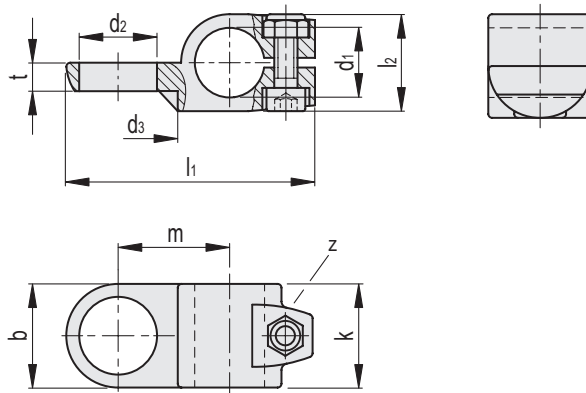
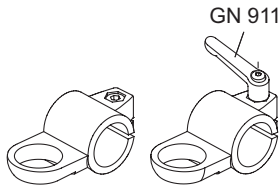
- Aluminium
- Epoxy resin coating
- Black, RAL 9005, textured finish **SW**
- Cylindrical-head screw DIN 912
- Stainless Steel AISI 304
- Hexagon nut DIN 985
- Stainless Steel AISI 304
- Self-locking via polyamide ring

FEATURES AND APPLICATIONS

The clamping bore of sensor holders GN 278.4 is mechanically machined and designed for construction tubes GN 990 (see page -).
 At the screw location **z**, the socket cap screw reduces the bore cross-section for clamping.
 For clamping without tools, the socket cap screw can be replaced by an adjustable lever GN 911 (see page -).

ACCESSORY

Adjustable Hand Levers GN 911 (see page -).



Conversion Table	
1 mm = 0.039 inch	
d1	
mm	inch
20	0.78
25	0.98
30	1.17

Code	Description	d1	d2	d3	b	k	l1	l2	m	t	z	z Clamping kit	⚖️
GN.60181	GN 278.4-B20-B18-2-SW	B 20	B 18	50	40	40	95	40	43	10	M8-25	-	185
GN.60182	GN 278.4-B20-B30-2-SW	B 20	B 30	50	40	40	95	40	43	10	M8-25	-	181
GN.60185	GN 278.4-B25-B18-2-SW	B 25	B 18	50	40	40	95	40	43	10	M8-25	GN 911-63 / GN 911-78	169
GN.60186	GN 278.4-B25-B30-2-SW	B 25	B 30	50	40	40	95	40	43	10	M8-25	GN 911-63 / GN 911-78	165
GN.60189	GN 278.4-B30-B18-2-SW	B 30	B 18	50	40	40	95	40	43	10	M8-25	GN 911-63 / GN 911-78	145
GN.60190	GN 278.4-B30-B30-2-SW	B 30	B 30	50	40	40	95	40	43	10	M8-25	GN 911-63 / GN 911-78	141